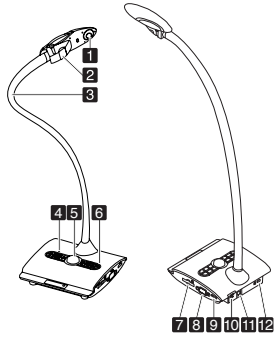




Lancement rapide de votre visualiseur *SPE-VI-101*

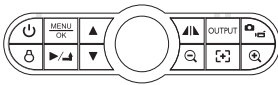
Quick start guide



Noms des composants - Component names

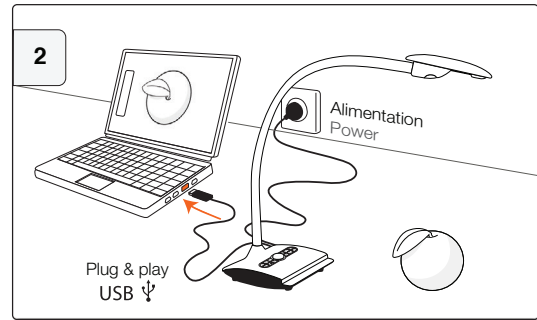
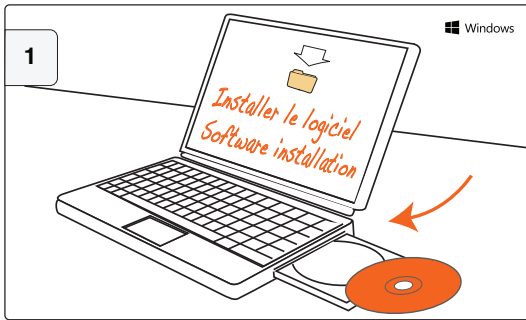
- | | |
|---|---------------------------------------|
| 1. Camera - Camera | 7. Carte SD - SD cart slot |
| 2. Lumière LED - LED lamp | 8. Sortie VGA - VGA output port |
| 3. Bras col de cygne - Gooseneck arm | 9. Sortie HDMI - HDMI output port |
| 4. Microphone - Microphone | 10. Port USB - USB port |
| 5. Récepteur du signal de la télécommande
Remote control signal receiver | 11. Alimentation - DC 5V Power socket |
| 6. Panneau de contrôle - Control panel | 12. Fente antivol - Antitheft slot |

Fonctions des composants - Component functions

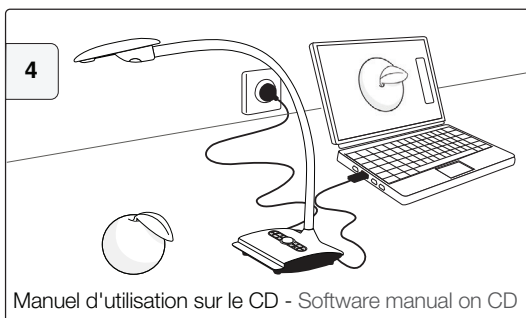
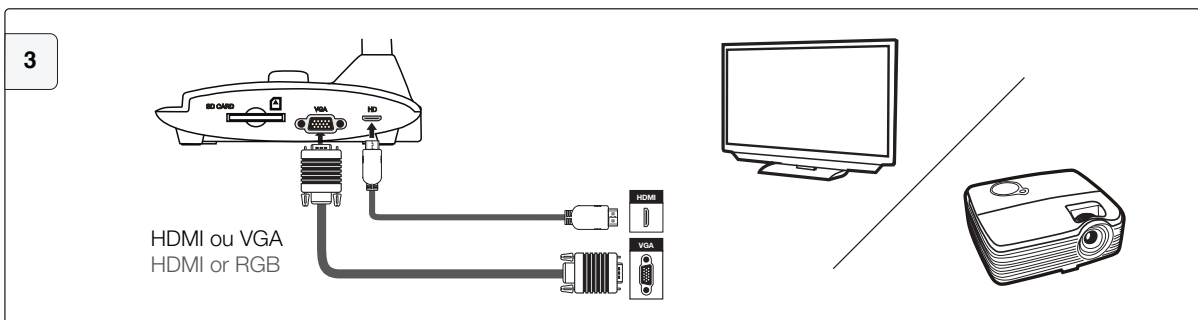


- | | |
|--|--|
| ⏻ Marche / Arrêt - Power on / off | ↕ Inverser l'image - Flip image |
| ▲▼ Touche du curseur - Up / Down button | OUTPUT Permuter entre les sorties VGA / HDMI -
VGA / HDMI Output Switch |
| ▶◀ Mode lecture pour afficher les photos et
vidéos enregistrées / Quitter le menu -
Enter Playback mode to display recorded still
images and video clips / Leave current menu | 📷 Mode Photo / Film - Capture a still
image / Record a video clip |
| 🔊 Allumer / Eteindre / Régler l'intensité de la
lumière LED - Turn on / off the LED lamp
and adjust the brightness of the LED lamp | 🔍 Agrandir - Zoom in |
| | 🔍 Mise au point automatique - Autofocus |
| | 🔍 Diminuer - Zoom out |

Avec un ordinateur via USB - With a computer via USB



Sans ordinateur, directement sur un écran - Without a computer, direct connection to screen



5

Support :
www.speechi.net/support/spe-vi-101

Email :
support@speechi.net